



SKTM500
CHEMISTRY

The SK500 Chemistry Instrument and SEKURE[™] Reagents offer an ideal system for **low-to-moderate volume** laboratories seeking **exceptional throughput** with **minimal use of space** and water.



SEKISUI
DIAGNOSTICS

ABOUT SEKISUI DIAGNOSTICS

Sekisui Diagnostics is a diverse company with broad product lines, a global sales and distribution network, extensive product development capabilities, state of the art manufacturing facilities and deep diagnostics expertise. You might not recognize our name, but our products and global presence are long standing and significant.

SK500

The SK500 is a compact and efficient instrument with a full menu of quality reagents specifically designed and packaged for the system — it's the perfect addition to your laboratory.

BENEFITS OF THE SK500 SYSTEM

SEKURE Reagents

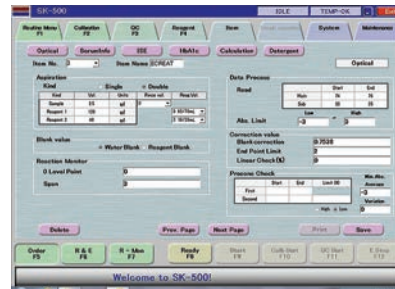
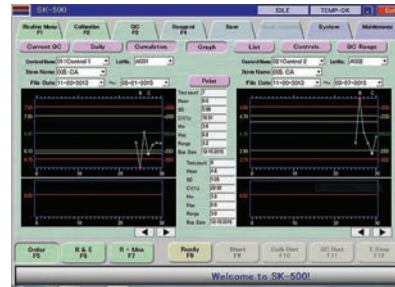
- High quality reagents optimized for SK500
- Liquid, ready-to-use—including barcodes

Efficient Reagent Usage

- Small reaction volumes increase the number of tests available in a reagent kit while reducing the patient sample volume required

Operation

- Routine operation is simplified for greater operator efficiency
- STAT capability available for urgent patient samples
- 580 tests/hour (with ISE) provides the speed and throughput needed to meet the testing volume requirements of small-to-moderate sized laboratories



SIMPLE OPERATION

- Routine operation is simple and requires minimal training
- Robust QC and System management is available for advanced operation

SAMPLE HANDLING

- Sample carousel holds 72 patient samples plus calibrators and controls
- Use primary tubes or cups
- Internal barcode reader simplifies sample handling
- Bi-directional host-query to access test requests



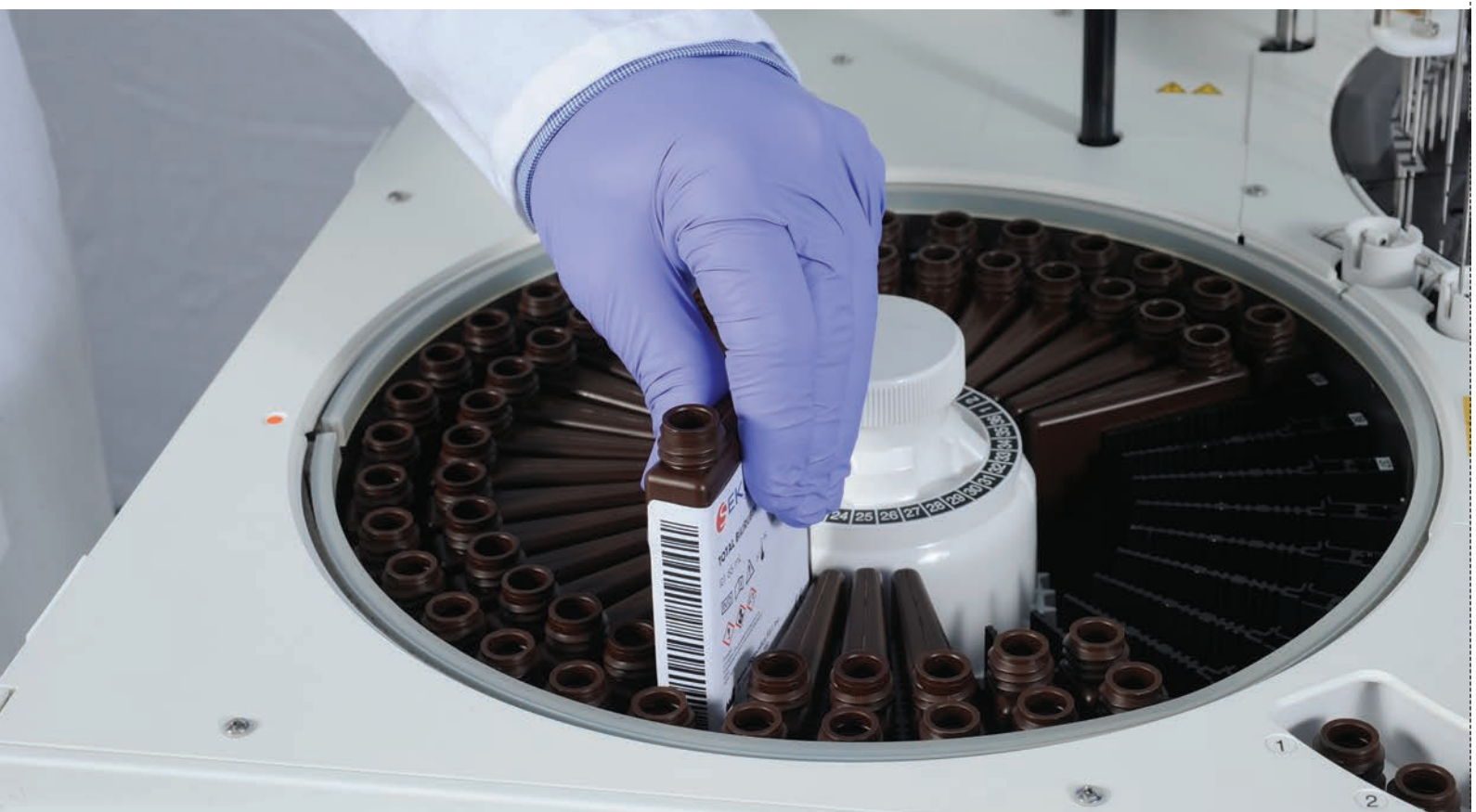


Rely on us—introducing the SEKURE™ line of clinical chemistry reagents. Producing over 1.5 billion chemistry tests per year across a broad menu of over 65 assays, you can depend on Sekisui Diagnostics for your chemistry testing requirements. High quality, performance and support to help you achieve the results you need to feel secure...yes, SEKURE.

Most SEKURE clinical chemistry reagents are available formatted for use on the SK500. They are liquid, ready-to-use and include SK500 specific bottles with barcoded reagent information.



SEKURE reagents are also available in an open-system format that can be used on multiple platforms—including the SK500.





SPECIFICATIONS

TEST THROUGHPUT	480 tests/hour or 580 tests/hour with ISE
TEST ITEMS	36 chemistries + 3 ISE
METHODS	End point assay, Rate assay, ISE
SAMPLE TYPES	Serum, Plasma, Urine, Dialysate, CSF (ISE not available for CSF)
SAMPLE COMPARTMENT	72 patient samples on board STAT capability
SAMPLE DISPENSING VOLUME	2- 20 µL (0.1 µL increments)
REAGENT COMPARTMENT	Capacity for 36 onboard assays + 3 ISE Optimized applications of Sekisui reagents Minimum Reaction Volume: 120 µL
USER INTERFACE	Touch screen
NUMBER OF BOTTLES ON BOARD	R1: 36 positions, R2: 35 positions
BOTTLE SIZE	R1: 70mL, R2: 20mL
QC MANAGEMENT	Real-time QC, Within a day, Day-to-day variation
BARCODE	Sample and reagent barcode reader
CALIBRATION	Linear, Factor, Non-linear (Logit-log, Spline, Exponential, Polynomial)
OPTICAL SOURCE	Tungsten halogen lamp
OPTICAL MEASUREMENTS	12 fixed wavelengths (340, 380, 405, 450, 505, 546, 570, 600, 660, 700, 750, 800nm)
OPTICAL RANGE	OD 0-2.5
OPERATING SYSTEM	Windows®7
OPERATION	Touch screen
OUTPUT	RS232C serial cable, LAN (TCP/IP)
TEST RESULTS STORAGE	100,000 tests
WATER CONSUMPTION	13L/hour
DI WATER SYSTEM	Included
DIMENSIONS (WXDXH)	105 X 75 X 115 (cm); 41.5 X 29.5 X 45 (in)
WEIGHT	300kg; 662lbs



THE AMERICAS

Sekisui Diagnostics, LLC
4 Hartwell Place
Lexington, MA 02421
Phone: 800 332 1042
Fax: 800 762 6311
Email: questions@sekisui-dx.com
ISO 13485 Certified

INTERNATIONAL

Sekisui Diagnostics (UK) Limited
Liphook Way, Allington
Maidstone, Kent, ME16 0LQ, UK
Phone: +44 1622 607800
Fax: +44 1622 607801
Email: info@sekisui-dx.com
ISO 9001 Certified, ISO 13485 Certified



SK FORMAT ASSAYS

Albumin	2 x 65mL	Glucose	2 x 68mL
Alkaline Phosphatase	2 x 65mL (R1); 2 x 18mL (R2)	HDL Cholesterol	2 x 60mL (R1); 2 x 18mL (R2)
ALT	2 x 68mL (R1); 2 x 18mL (R2)	LDL Cholesterol	2 x 60mL (R1); 2 x 18mL (R2)
AST	2 x 68mL (R1); 2 x 18mL (R2)	Phosphorus	2 x 68mL (R1); 2 x 15mL (R2)
Calcium	2 x 65mL	Potassium	ISE
Chloride	ISE	Sodium	ISE
Cholesterol, Total	2 x 68mL	Total Bilirubin	2 x 65mL (R1); 2 x 18mL (R2)
CO2/Bicarbonate	2 x 68mL	Total Protein	2 x 68mL
Creatinine (Enzymatic)	2 x 60mL (R1); 2 x 20mL (R2)	Triglyceride	2 x 65mL
Direct Bilirubin	2 x 68mL (R1); 2 x 18mL (R2)	Urea Nitrogen (BUN)	2 x 68mL

OPEN SYSTEM ASSAYS

Acetaminophen	3 x 10mL (R1); 6 x 10mL (R2)	LDH	3 x 100mL (R1); 1 x 75mL (R2)
Ammonia	2 x 20mL	Lactate	1 x 30mL (R1); 1 x 20mL (R2)
Amylase	10 x 5mL	Lipase	5 x 30mL (R1); 1 x 200mL (Solvent) 1 x 60mL (Activator)
CRP, Wide Range	1 x 30mL (R1); 1 x 20mL (R2)	Magnesium	4 x 125mL
Creatine Kinase	1 x 100mL (R1); 1 x 25mL (R2)	Microalbumin	4 x 20mL (R1); 2 x 10mL (R2)
Ethanol	6 x 30mL	Salicylate	4 x 10mL (R1); 4 x 10mL (NADH)
GGT	1 x 100mL (R1); 1 x 20mL (R2)	UIBC	1 x 100mL (R1); 1 x 25mL (R2)
Iron	3 x 100mL (R1); 1 x 75mL (R2)	Uric Acid	2 x 100mL



THE AMERICAS

Sekisui Diagnostics, LLC
4 Hartwell Place
Lexington, MA 02421
Phone: 800 332 1042
Fax: 800 762 6311
Email: questions@sekisui-dx.com
ISO 13485 Certified

INTERNATIONAL

Sekisui Diagnostics (UK) Limited
Liphook Way, Allington
Maidstone, Kent, ME16 0LQ, UK
Phone: +44 1622 607800
Fax: +44 1622 607801
Email: info@sekisui-dx.com
ISO 9001 Certified, ISO 13485 Certified

sekisuidiagnostics.com